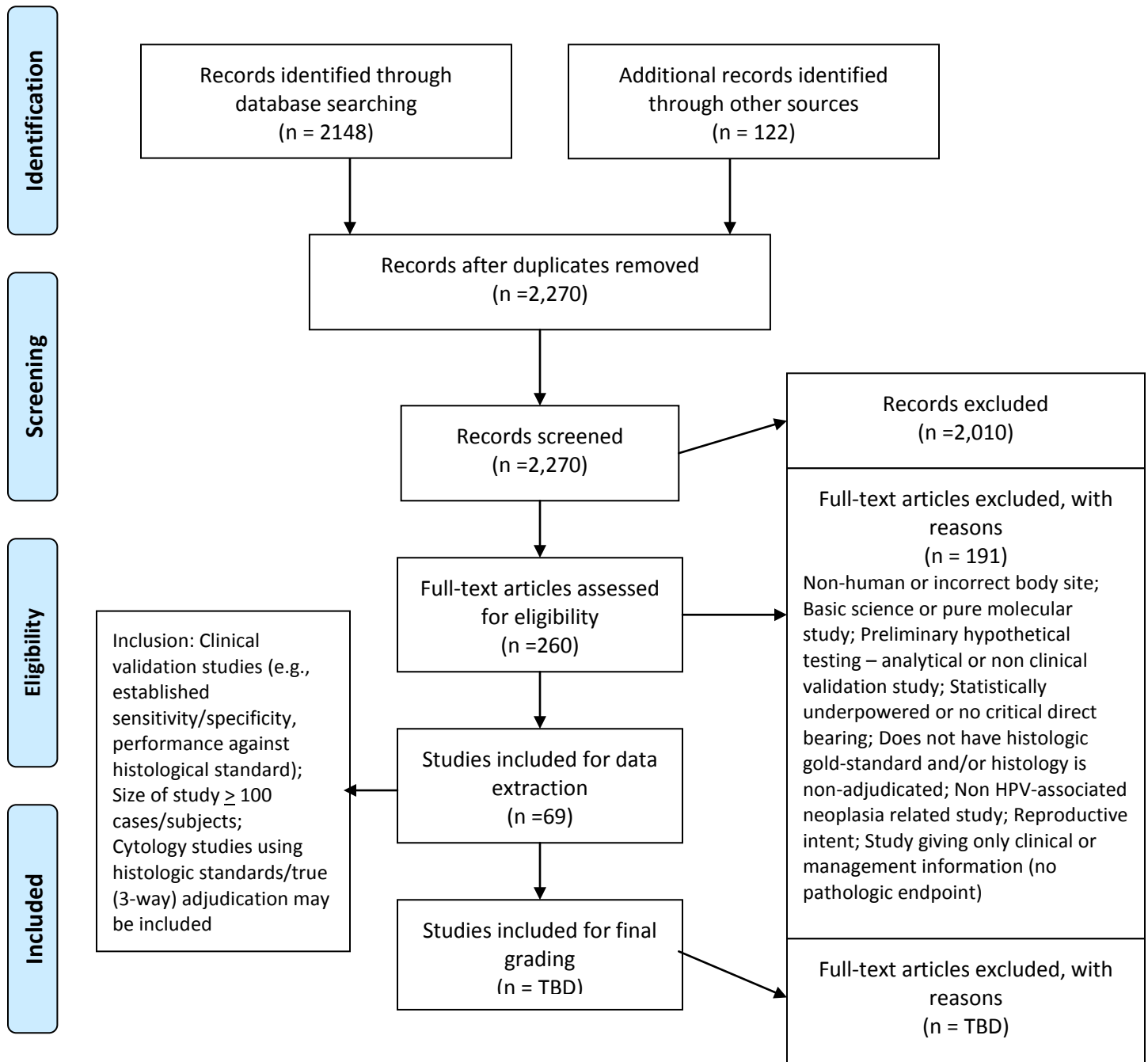


# Work Group on Molecular Markers for Histopathology Cervix, Vagina, Vulva, Penis, Anus and Perianus body sites

## Literature Review Flow Diagram



Adapted with permission from Moher D, Liberati A, Tetzlaff J, Altman DG. Preferred reporting items for systematic reviews and meta-analyses: the PRISMA statement. *PLoS medicine*. 2009;6:e1000097.